



10Days 9Nights Wonderful Northern Xinjiang

Normal Price

~~RM 11,088~~

PROMOTION PRICE

RM 10,888

/ person

TOUR HIGHLIGHTS

FLIGHT

- China Southern Airlines

ATTRACTIONS

- Heavenly Lake of Tianshan A famous alpine lake surrounded by snow-capped mountains and clear blue water.
- Hemu Village A scenic village with wooden houses, forests, and unique Tuwa culture.
- Kanas Scenic Area (Includes shuttle bus) Enjoy a peaceful boat ride on Kanas Lake, surrounded by forests and mountains.
- Sayram Lake A stunning highland lake with snow mountains, grasslands, and wildflowers.
- Nalati Grassland Known as the Sky Grassland, featuring vast green meadows and mountain views.
- Fish Watching Pavilion (Includes shuttle bus) Offers a panoramic view of Kanas Lake from above.

GOURMET

- Roast Lamb - Well-seasoned with traditional Xinjiang spices.
- Dapanji - Chicken with potatoes and peppers in a rich, spicy...
- Hand-pulled noodles - Fresh noodles with meat and vegetables...
- River fish - Fresh, soft, and flavorful.
- Lamb kebabs - Juicy grilled skewers

EXPERIENCE

- Ghost Town (Include mini train) Experience a unique wind-ero...

HOTELS

ACCOMMODATION

- Flight: China Southern Airlines
- FuKang. Wyndham Garden Hotel or similar
- FuYun. DoubleTree by Hilton Altay Fuyun or similar
- Burqin. Burqin International Hotel or similar
- Jiadengyu. SenHai Holiday Hotel or similar
- Burqin. Burqin International Hotel or similar
- Kuitun. Du Shan Zi Hui Yang WanDa Jin Resort or similar
- Yining. TianYuan International Hotel or similar
- Yining. Wenzhou International Hotel or Similar
- Urumqi. JinJiang International Hotel or similar

DAILY ITINERARY

Day 1 Kuala LumpurGuangzhouUrumqi CZ 5036(0120/1545)+CZ6886(0810/1330)



Transfer to Ürümqi Hongshan Red Hill Park

Is an inner-city mountain in Ürümqi, capital of Xinjiang, China. The mountain, sometimes referred to as a hill for its smaller size than a mountain in land form, is the symbolic scenic spot of Ürümqi. The local Ürümqi Television Station.

Breakfast Meal on Board	Lunch Meal on Board	Dinner Flaming Mountain Buffet + Dance Performance	Hotel FuKang. Wyndham Garden Hotel or similar
-----------------------------------	-------------------------------	---	---

Day 2 FuKang ~ TianShan (6HRS) Fuyun



Heavenly Lake of Tianshan (Included shuttle bus & boat ride)

World Natural Heritage, National Geological Park, National Key Scenic Spot, National Civilized Scenic Area, China's top ten charming leisure lakes.



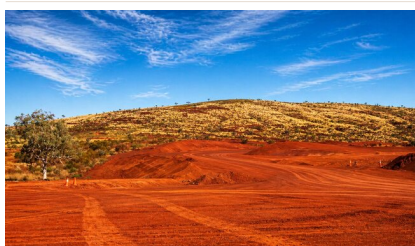
Western Gobi Desert Scenery

Refers to the landscape and views found in the western region of the Gobi Desert. This area is characterized by vast expanses of arid land, sand dunes, rocky terrain, and unique desert flora and fauna. The Western Gobi offers a.



Karamei Li (Drive Pass)

Established in April 1982, the Karamei Li Nature Reserve covers an area of 14,856.48 square kilometers. Located in the Karamei Li area of the Junggar Basin in Xinjiang, it symbolizes a desert of death. At first glance, it appears silent.



Huoshao Mountain

The Junggar Basin, China's second-largest basin, is dubbed the "Prehistoric Geological Museum." It boasts the stunning Rainbow Mountains, vast areas of petrified wood, and dinosaur fossils. Located about 250 kilometers from Urumqi, in the southeastern part of the Junggar Basin,.

Breakfast Hotel	Lunch Local Cuisine	Dinner Dinner : Local Cuisine + Big Plate Chicken	Hotel FuYun. DoubleTree by Hilton Altay Fuyun or similar
---------------------------	-------------------------------	--	--



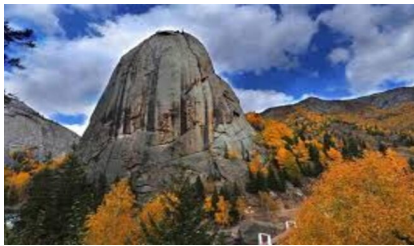
Cocoseiro Swamp (Pass by)

Cocoseiro, located within the territory of Fuyun County, Altay Prefecture, Xinjiang, China, is about 23 kilometers away from Fuyun County. It is one of the main scenic areas of Keketuohai National Geological Park and is a naturally formed swamp wetland.



Keketuohai Scenic Area (Included shuttle bus)

The Keketuohai Scenic Area and National Geological Park are situated in Fuyun County, Altay Prefecture, northern Xinjiang. Covering 788 square kilometers, it's 485 kilometers from Urumqi and 53 kilometers from Fuyun County. The area comprises the Irtys Grand Canyon, Cocoseiro,.



Shenzhong Mountain

Located 40 kilometers upstream of the Irtys River in Fuyun County, features two bell-shaped giant rocks, around 1000 meters high, adorned with trees and moss. The scenery is spectacular, particularly after rainfall, with swirling clouds and rainbows in the sky.



The Irtys Grand Canyon

The Irtys Grand Canyon, in Fuyun County, Altay Prefecture, Xinjiang, is a key site in Keketuohai National Geological Park. It showcases granite peaks along the Irtys River, with rounded shapes and various formations, often called "108 Peaks". These peaks have.



Couple Tree

In this grassland, six trees stand out, with the birch and pine in the middle forming the iconic "Couple Tree". In autumn, the birch turns golden while the pine stays green, creating a striking contrast as they sway together in.



Rainbow Bay (Enter to visit)

The most beautiful Yadan landform in Xinjiang. The rocks of the beach are different in mineral content, so they can display various colors.

Breakfast Hotel	Lunch Local Cuisine	Dinner Local Cuisine + Cold Water Fish Feast	Hotel Burqin. Burqin International Hotel or similar
---------------------------	-------------------------------	--	---

Day 4 *Burqin (4HRS) Jiadengyu*



Hemu Village (Included Shuttle Bus): Hemu Observation Deck + Tuwa Village

View the beautiful scenery along the way, just like passing the shy spring, amorous summer and charming autumn.

Breakfast

Hotel

Lunch

Local Cuisine

Dinner

Local Cuisine

Hotel

Jiadengyu. SenHai Holiday Hotel or similar

Day 5 *Jiadengyu (4.5HRS) Burqin*



Kanas Scenic Zone (Include shuttle bus)

Kanas Scenic Zone borders Kazakhstan and Russia in the north and Mongolia in the east and covers an area of 10,000 m². It includes one National Nature Reserve, one national geological park, and two national forest parks. It contains many natural.



Birch Forest (can visit & take photo)

The Habahe Birch Forest, the largest naturally grown birch forest in northwest China, is located in Kulebai Township, Habahe County, Altay Prefecture, Xinjiang, about 4 kilometers west of the county seat. It spans about 28 kilometers in length and 1.5.



Dragon Bay (can visit & take photo)

The local name for it is Kazan Lake, also known as Guodi Lake, named after its shape resembling the bottom of a pot. Wolong Bay is situated 140 kilometers from Burqin County on the way to Kanas, and it is.



Crescent Moon Bay (can visit & take photo)

The Moon Bay is named of its shape like crescent moon. The Moon Bay is most picturesque in autumn, when the forests around the Moon Bay turn vibrant colors



Sacred Bay (can visit & take photo)

Sacred Bay in Northern Xinjiang generally refers to one of the picturesque,, winding bays within the Kanas Lake Nature Reserve in the Altai Mountains.



Fish Watching Pavilion (Include shuttle bus)

On the other bank of Kanas Lake to overlooking the panorama of Kanas Lake panorama



Kanas Lake (Included Boat Ride)

Color varies according to the seasons and weather. Sometimes it's blue, sometimes green, while sometimes it's as white as milk.



Hedi Riverside Night Market

The Night is located beside of the Irtysh River, Enjoy the walk at the night market with the nice view of the river.

Breakfast Hotel	Lunch Local Cuisine	Dinner Local Cuisine	Hotel Burqin. Burqin International Hotel or similar
---------------------------	-------------------------------	--------------------------------	---

Day 6 *Burqin (5HRS) Kuitun*



Ghost Town (Include mini train)

It likes an ancient city that was built in thousand years ago. It is a workout of the nature during the passing years.



Karamay Oil Field (drive Pass)

The hundred kilometers spread of oil derricks and nodding

Breakfast Hotel	Lunch Local Cuisine	Dinner Local Cuisine	Hotel Kuitun. Du Shan Zi Hui Yang WanDa Jin Resort or similar
---------------------------	-------------------------------	--------------------------------	---

Day 7 *Kuitun (5.5HRS) Yining*



Sayram Lake (Include shuttle bus)

The lake is like a brilliant emerald inlaid in the basin surrounded by Tianshan Mountain



Guozigou (Photostop)

Hailed as "the most famous tourism resort in Ili. It is located 40km northeast of Huocheng County and is the gateway to the Urumqi-Ili Highway



Six-Star Street (Own Expenses Taste Hundred-Year-Old Handcrafted Ice Cream, Experience local Customs)

Six-Star Street is an old neighborhood built in the mid-1930s based on six major policies promoted by the Xinjiang Provincial Government. Planned by German engineer Vasili, it has a circular layout with six main roads radiating outward, dividing the area.

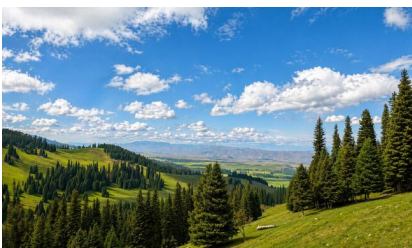
Breakfast Hotel	Lunch Local Cuisine	Dinner Local Cuisine	Hotel Yining. TianYuan International Hotel or similar
---------------------------	-------------------------------	--------------------------------	---

Day 8 *Yining (Ghulja) (3.5HRS) Nalati (3.5HRS) Yining (Ghulja)*



Yili River & Grassland View

Endless green grasslands surrounded by snow-capped mountains, stunning scenery nourished by river valleys



Nalati Grassland

Located to the east of Nalati Town of Xinyuan County, the Nalati Grassland is the sub-alpine meadow of the Gongnaisi Grassland that is one of the four largest grasslands of the world. Owing to its high altitude and steep terrain,.

Breakfast Hotel	Lunch Local Cuisine	Dinner Local Cuisine	Hotel Yining. TianYuan International Hotel or similar
---------------------------	-------------------------------	--------------------------------	---

Day 9 *Yining (Ghulja) (5HRS) Urumqi*



Yining > (1500pm) Urumqi (Included 2nd Class Ticket)

After breakfast, head to the train station (1010am depart) Yining > (1500pm) Urumqi (Included 2nd Class Ticket)



International Grand Bazaar

The biggest market in this region. You can buy some local handicrafts and imported items which come from the neighboring countries.

Breakfast Hotel	Lunch Local Cuisine	Dinner Local Cuisine	Hotel Urumqi. JinJiang International Hotel or similar
---------------------------	-------------------------------	--------------------------------	---



After breakfast, transfer to the airport and take your flight back home.

Breakfast Hotel	Lunch Meal on Board	Dinner Meal on Board	Hotel
---------------------------	-------------------------------	--------------------------------	--------------