



8Days 6Nights Seoul/Jeju Island/ Alpaca World/ Nami Island/ Mount Sorak/Everland

TOUR HIGHLIGHTS

ATTRACTIONS

- SEOUL SKY Observatory (Lotte World Tower)
- Gyeongbokgung Palace
- Alpaca World
- Mt. Sorak National Park
- Everland Theme Park
- Snoopy Garden House
- Nami Island

GOURMET

- Six Layer Seafood Steamed With Crab And Abalone
- Black Pork BBQ
- Seafood Abalone Hot Pot
- Ginseng Chicken Soup
- Shabu-Shabu+Bibimbap
- Korea Jokbal (Pork Trotters)
- Korean + International Buffet

EXPERIENCE

- Wearing Hanbok visit Gyeongbok Palace
- Snoopy Garden
- Kimchi & Seaweed DIY
- Alpaca Interaction
- The Painters HERO Show

HOTELS

ACCOMMODATION

- Nanta Hotel/Ramada City or similar class x2 Nights
- Hanwha Resort or similar class x1 Night
- Ramada By Wyndham/Hanwha Resort Yongin or similar class x1 Night
- Fairfield by Marriott Hotel/Sollago Myeongdong Hotel or similar class x2 Nights

DAILY ITINERARY

Day 1 *KLIA -> INCHEON*

Day 2 *ARRIVAL INCHEON -> SEOUL -> JEJU ISLAND*



Gyeongbok Palace (Wearing Hanbok)

(Closed on Tuesday, replace by Deoksu Palace) is a former royal palace in Seoul, South Korea. Established in 1395, it was the first royal palace of the Joseon dynasty, and is now one of the most significant tourist attractions in.



Presidential Blue House (Pass by)

Located just past Gyeongbokgung Palace, the Blue House (Cheong Wa Dae) is the imposing official residence of South Korea's president. This lovely complex is built mainly in the traditional South Korean architectural style and tours are a great way to.



National Folk Museum

is a national museum located on the grounds of Gyeongbokgung in Jongno District, Seoul, South Korea. It uses replicas of historical objects to illustrate the history of traditional life of the Korean people.



Mysterious Road

The Jeju Mysterious Road, or Dokkaebi Road, is a famous tourist spot where cars in neutral appear to roll uphill, defying gravity. This 200-meter-long road creates a powerful optical illusion where the surrounding landscape makes a slight downhill slope look.



Yongduam Rock

The rock resembles a dragon raising its head, which is how it got the name "Dragon Head Rock." It is said that depending on the angle and lighting, the rock can look like a dragon's head, body, or a dragon.

Breakfast

Meal on Board

Lunch

Local Cuisine

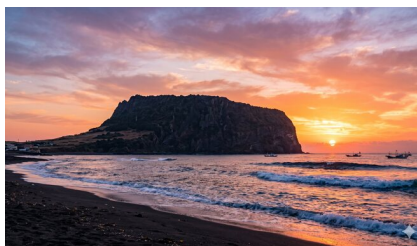
Dinner

Local Cuisine

Hotel

Nanta Hotel/Ramada City or similar class

Day 3 *JEJU ISLAND*



Seongsan Sunrise Peak

Located in the eastern part of Jeju Island, South Korea, this is one of the island's most iconic natural attractions and is listed as a UNESCO World Heritage Site. It was formed around 5,000 years ago by an underwater volcanic.



Seongup Folk Village

The village features traditional thatched-roof houses, stone walls, old courtyards, and historical buildings, allowing visitors to step back in time and experience the look and feel of old Jeju. It was once an important administrative center in ancient times and.



Rape Flowers Field (Seasonal)

Canola flower fields are a seasonal natural attraction in spring, where vast fields of bright yellow canola blossoms bloom, creating a breathtaking sea of flowers. When the wind blows, the flowers sway like waves, filling the air with a light.



Delekoomda Cafe (One Americano or Juice for each person)

It is a popular café and photo spot that combines a coffee shop, a leisure ranch, and scenic attractions. It features wide grassland views and a natural Jeju Island atmosphere, allowing visitors to enjoy coffee while relaxing in a calm,.



Snoopy Garden

is where visitors can meet Snoopy and friends from the popular American comic series "Peanuts." The themed halls designed under the overall theme of "Peanuts, Nature & Life" allows one to connect their everyday life through episodes from "Peanuts." Snoopy.

Breakfast Hotel	Lunch Local Cuisine	Dinner Local Cuisine	Hotel Nanta Hotel/Ramada City or similar class
---------------------------	-------------------------------	--------------------------------	--

Day 3 JEJU ISLAND -> SEOUL -> MT SORAK



Alpaca World

is the first experiential zoo to be founded in Gangwon-do. Visitors can interact and feed cute alpacas surrounded by the pristine beauty of nature. Alpaca World has made appearances in many television shows, featuring "the genius alpaca" and the first.



Nami Island

Located in Chuncheon, Gangwon-do, South Korea, this is one of the country's most famous tourist attractions. The island is shaped like a half-moon and is known for its beautiful scenery throughout the four seasons--cherry blossoms in spring, lush greenery in.

Breakfast Hotel	Lunch Local Cuisine	Dinner Local Cuisine	Hotel Hanwha Resort or similar class
---------------------------	-------------------------------	--------------------------------	--



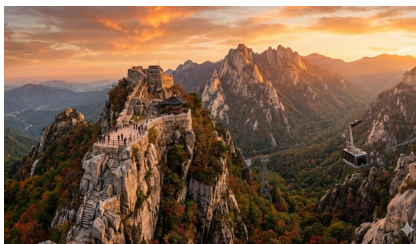
Mt. Sorak National Park

Located in the northeastern region of Gangwon-do, Seoraksan National Park is one of South Korea's most iconic mountain parks, renowned for its majestic granite peaks, deep valleys, crystal-clear streams, and distinct seasonal landscapes. Among its most celebrated highlights are towering.



Sinheungsa Temple

Located within Seoraksan National Park in Sokcho, Gangwon-do, Sinheungsa Temple is a renowned ancient Buddhist temple belonging to the Jogye Order, the largest sect of Korean Buddhism. With a rich history spanning over 1,300 years, this millennium-old temple serves as.



Kwengumseong Fortress (By cable car - subject weather conditions)

Located within Seoraksan National Park, this ancient fortress ruins is perched atop a rugged mountain peak, renowned for its dramatic terrain and spectacular mountain vistas. Visitors typically take a scenic 5 to 10-minute cable car ride up the mountain, followed.



Everland (Passport Ticket with unlimited ride)

A large theme park in Gyeonggi-do, South Korea that includes a zoo, amusement park, snow sledding area, and botanical garden.

Breakfast Hotel	Lunch Local Cuisine	Dinner Local Cuisine	Hotel Ramada By Wyndham/Hanwha Resort Yongin or similar class
---------------------------	-------------------------------	--------------------------------	--



SEOUL SKY Observatory (Floor 117-120)

Soar to the top of Lotte World Tower--Korea's highest peak and the world's third-tallest observation deck at 555 meters (123 floors). Rocket up in the world's fastest elevator (600m/min) to enjoy breathtaking 360-degree panoramic views of Seoul. Don't miss the.



Seaweed Museum (Kimchi & Seaweed DIY Experience)

Dive into the rich culinary traditions of Korea at the Seaweed Museum! This fun and interactive attraction offers a unique hands-on experience where you can make your own authentic Kimchi and traditional seaweed. It is a perfect blend of culture,.



Ikseon-Dong

Located in Jongno-gu, Seoul, this is a traditional neighborhood with over a century of history, known as one of the oldest and most densely packed hanok (traditional Korean houses) villages in Korea. It features a maze-like network of narrow alleys.

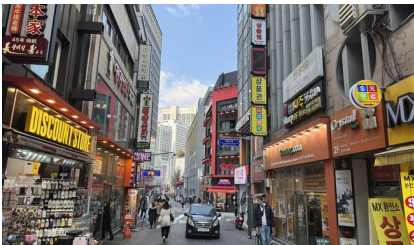
Breakfast Hotel	Lunch Local Cuisine	Dinner Local Cuisine	Hotel Fairfield by Marriott Hotel/Sollago Myeongdong Hotel or similar class
---------------------------	-------------------------------	--------------------------------	--

Day 7 *SEOUL*



The Painters HERO Show

It is a Korean non-verbal art show combining live painting, comedy, dance, music, and lighting effects. With little dialogue, performers create large artworks on stage while entertaining the audience with humor and storytelling. The highlight is the final reveal of.



Myeongdong + Duty Free Shop

Myeongdong is one of Seoul's most famous shopping districts and a must-visit destination for tourists. It is home to a wide variety of cosmetics stores, fashion boutiques, shoe shops, accessory stores, K-pop merchandise outlets, and popular Korean street food stalls.

Breakfast Hotel	Lunch Local Cuisine	Dinner Local Cuisine	Hotel Fairfield by Marriott Hotel/Sollago Myeongdong Hotel or similar class
---------------------------	-------------------------------	--------------------------------	--

Day 8 *SEOUL -> INCHEON -> KLIA*



Local Product Shop

(Ginseng Outlet / Cosmetics Shop / Liver Supplement Shop)

Breakfast Hotel	Lunch Meal On Board	Dinner	Hotel
---------------------------	-------------------------------	---------------	--------------