

 Resorts World Cruises



DUAL HOMEPORT FROM  
MALAYSIA & SINGAPORE

# Genting Dream

*A Resort Cruising At Sea*



# A Resort Cruising At Sea



What a day on the Genting Dream looks like...

## The long and short of the Genting Dream

At 335m end to end, we're bigger than a skyscraper and way more fun.



Take a virtual 360° tour

Gross Tonnage **150,695 tons**  
 Length **335m**  
 Width **40m**  
 Decks **18**  
 Passenger Capacity **3,352 (Lower Berth)**  
 Staterooms **1,674**  
 Manufacturer **Meyer Werft, Germany**



### 1 Rope Course & Zipline

Feel the thrill of gliding above the ocean on a 35-metre zipline.



### 2 Waterslide Park

Get drenched in fun on one of our six different waterslides.



### 3 Zouk & Zouk Beach Club

There's a party going on somewhere! Dive in at one of our famous pool parties or dance till dawn with our guest DJs at Zouk.



### 4 The Palace

An exclusive all-suite, all-inclusive enclave with private facilities and European-style butlers. It is a ship-within-a-ship boutique hotel for connoisseurs of true luxury and hospitality.



### 5 The Lido

Our buffet-style restaurant with a smorgasbord of international and halal cuisine including vegetarian and non-vegetarian Indian dishes.



### 6 Bar City

Sit back and enjoy world-renowned vintages, premium Scotch whiskies, cocktails or bubbly while we entertain you with performances and live bands.



### 7 Crystal Life Spa

Rejuvenate your mind, body and spirit in our Asian and Western-style spas. You can also enjoy a selection of healthy meals and beverages here.



### 8 The Boutiques

Spurge on International luxury brands at our boutiques or outlet store.



### 9 Little Dreamers Club

Leave the kids with us while you explore the ship. They'll love our exciting line up of activities and classes. For kids aged 2 to 12.



### 10 Zodiac Theatre

Enjoy live production shows from our acclaimed entertainment team.





**PALACE VILLA** Approx. 224 sq.m | Max Occupancy 6 | Deck 17 | 1 King-size Bed + 1 Queen-size Bed + 1 Double Sofa Bed

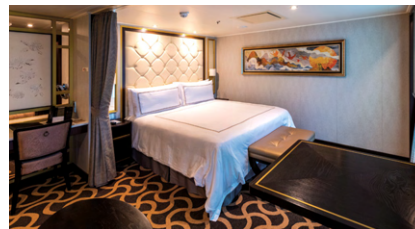


**PALACE PENTHOUSE** Approx 56 - 115.4 sq.m | Max Occupancy 4 - 6\* | Deck 13 / 16 | 1 King-size Bed + 1 Double Sofa Bed / 1 Queen-size Bed + 2 Double Sofa Beds / 1 Queen-size Bed + 1 Double Sofa Bed



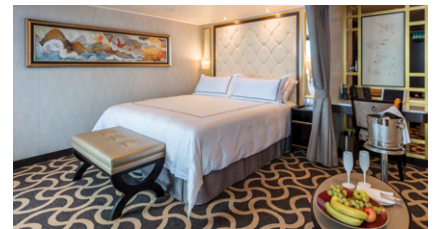
**PALACE DELUXE PREMIUM**

From 41 - 61 sq.m  
 Max Occupancy 4  
 Deck 9 / 10 / 11 / 12 / 13 / 15  
 1 King-size Bed + 1 Double Sofa Bed



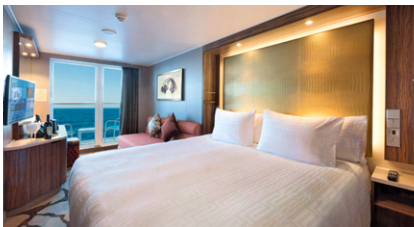
**PALACE DELUXE SUITE**

From 41 sq.m  
 Max Occupancy 4  
 Deck 15  
 1 Queen-size Bed + 1 Double Sofa Bed



**PALACE SUITE**

From 37 - 40 sq.m  
 Max Occupancy 4  
 Deck 13 / 15 / 16 / 17  
 1 Queen-size Bed + 1 Double Sofa Bed



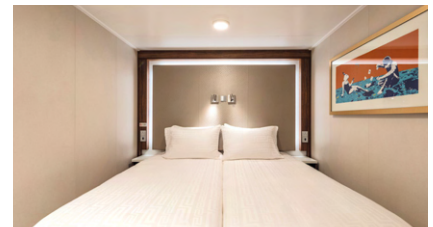
**BALCONY / BALCONY DELUXE STATEROOM**

From 20 sq.m / From 22 - 28 sq.m  
 Max Occupancy 3 - 4 / 2 - 4  
 Deck 8 / 9 / 10 / 11 / 12 / 13 / 15  
 1 Queen-size Bed + 1 Single Sofa Bed / 1 Single Sofa Bed + 1 Ceiling Pullman Bed / 1 Double Sofa Bed



**OCEANVIEW STATEROOM**

From 16 - 35 sq.m  
 Max Occupancy 2 - 4  
 Deck 5 / 9 / 10 / 11 / 12 / 13  
 2 Single Beds / 2 Single Beds + 1 Single Sofa Bed / 2 Single Beds + 1 Single Sofa Bed + 1 Ceiling Pullman Bed



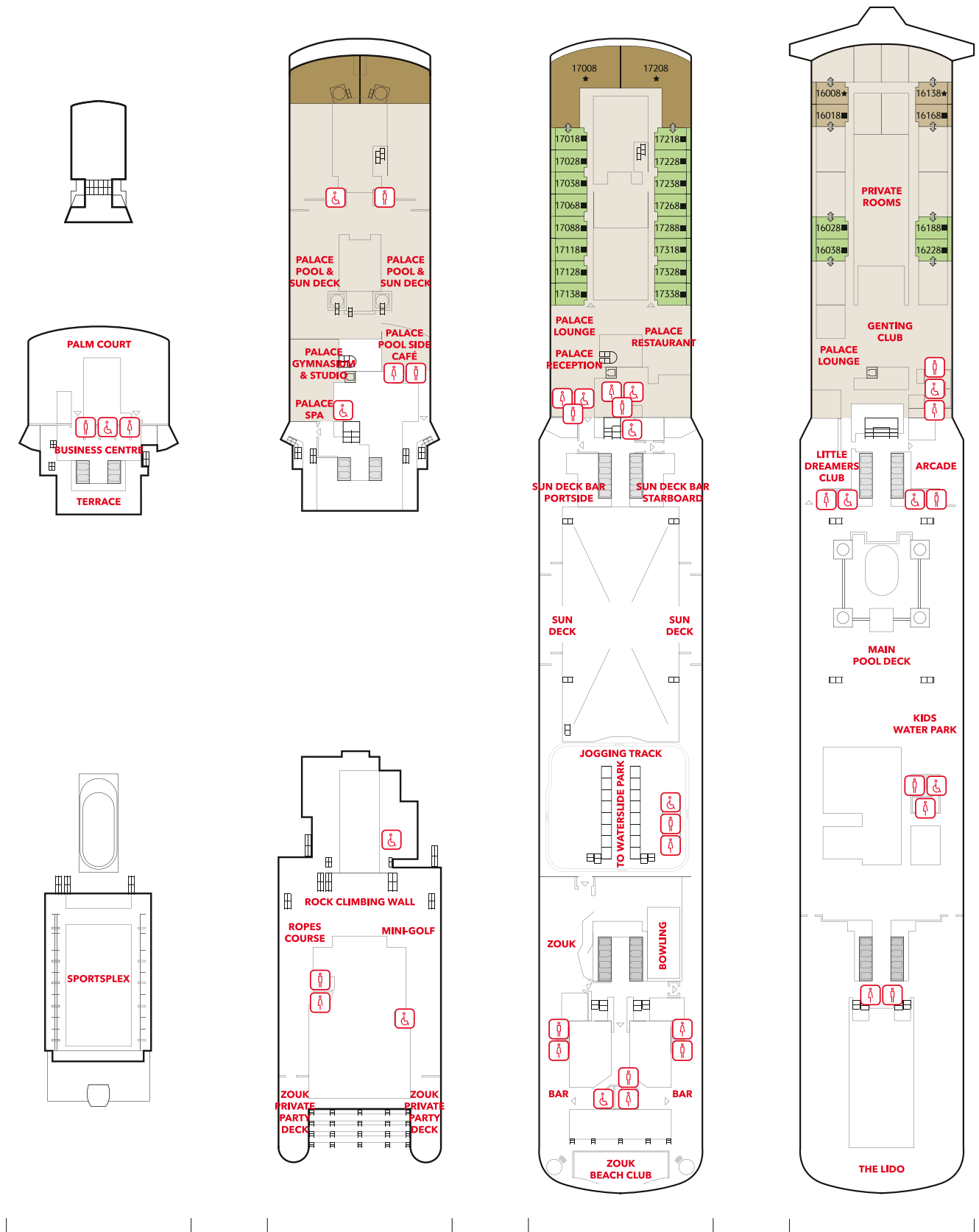
**INTERIOR STATEROOM**

From 13 - 14 sq.m  
 Max Occupancy 2 - 4^  
 Deck 5 / 8 / 9 / 10 / 11 / 12 / 13 / 15  
 2 Single Beds / 2 Single Beds + 1 Ceiling Pullman bed / 1 Single Bed + 1 Pullman Bed + Double Sofa Bed

\* The maximum occupancy of designated Palace Penthouses can be up to 6 guests upon request, subject to stateroom availability.

^ The above image is for a stateroom configuration for 2 persons - other stateroom configurations for 3 persons and 4 persons are also available.

# Genting Dream Deck Plans



## DECK 19

Lounge, Business Centre & SportsPlex

## DECK 18

The Palace, Ropes Course, Mini-Golf, Rock Climbing Wall & Zouk Private Party Deck

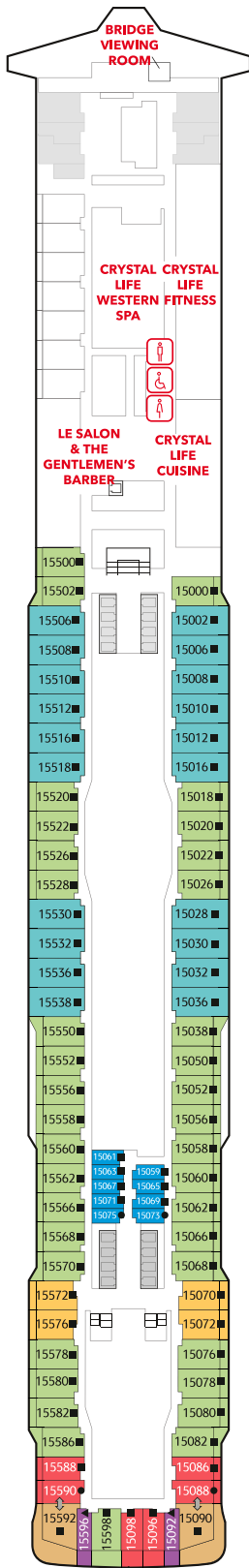
## DECK 17

The Palace, Suites, Zouk & Zouk Beach Club

## DECK 16

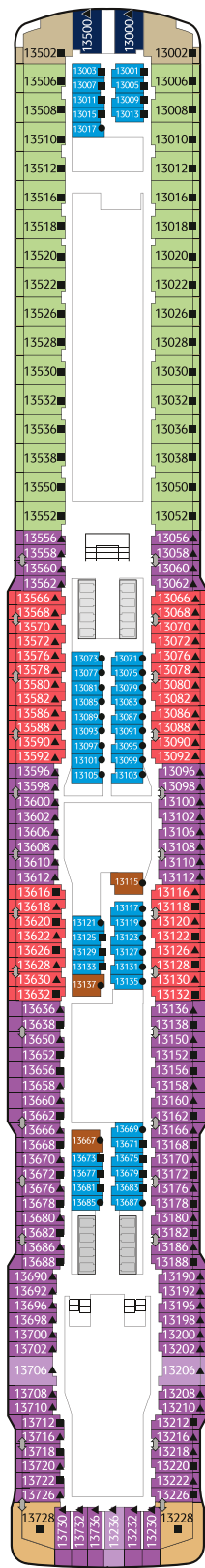
Genting Club, Suites, Entertainment Venues, Water Activities & Restaurant





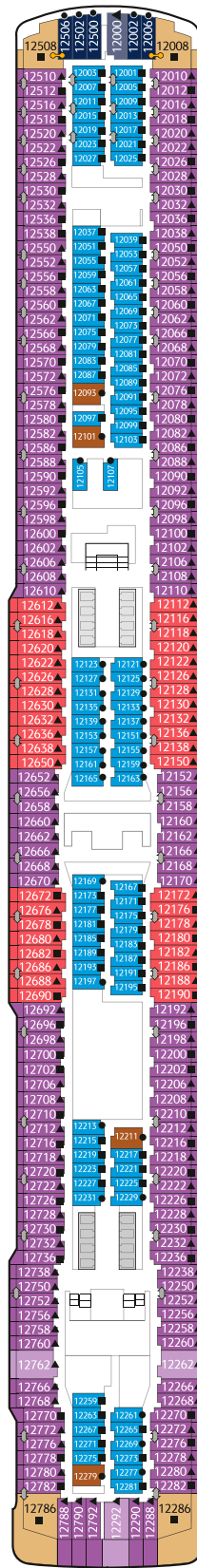
**DECK 15**

Western Spa, Fitness Centre,  
Suites, Balcony Deluxe,  
Balcony & Interior Staterooms



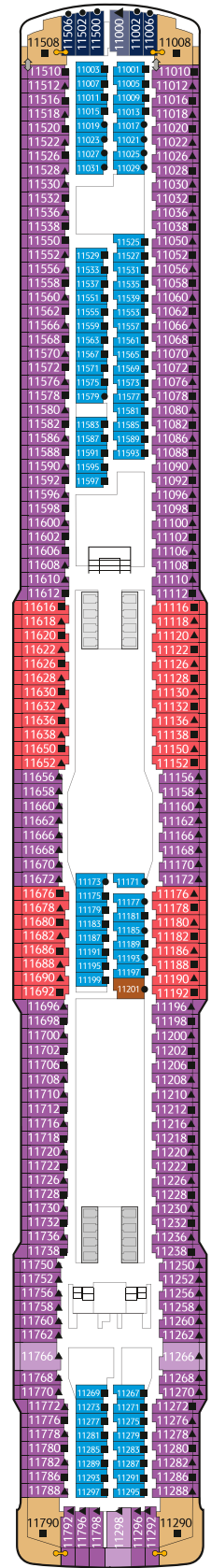
**DECK 13**

Suites, Balcony Deluxe,  
Balcony, Oceanview &  
Interior Staterooms



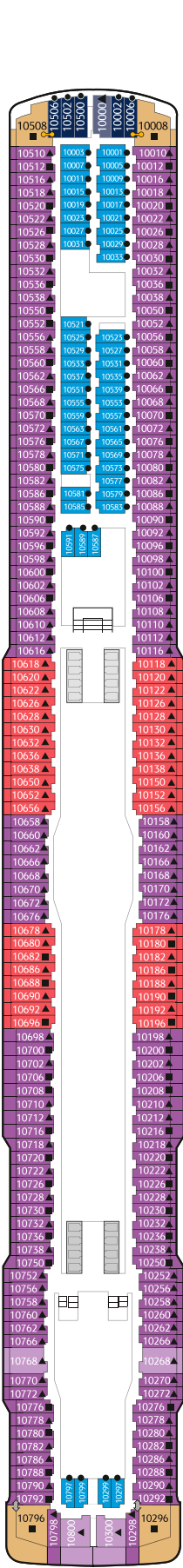
**DECK 12**

Suites, Balcony Deluxe,  
Balcony, Oceanview &  
Interior Staterooms



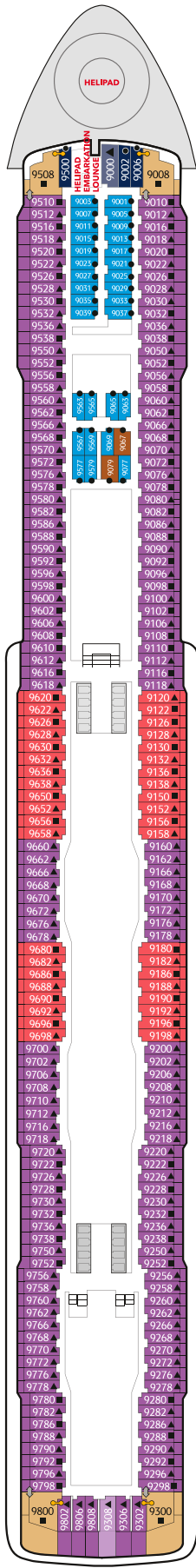
**DECK 11**

Suites, Balcony Deluxe,  
Balcony, Oceanview &  
Interior Staterooms



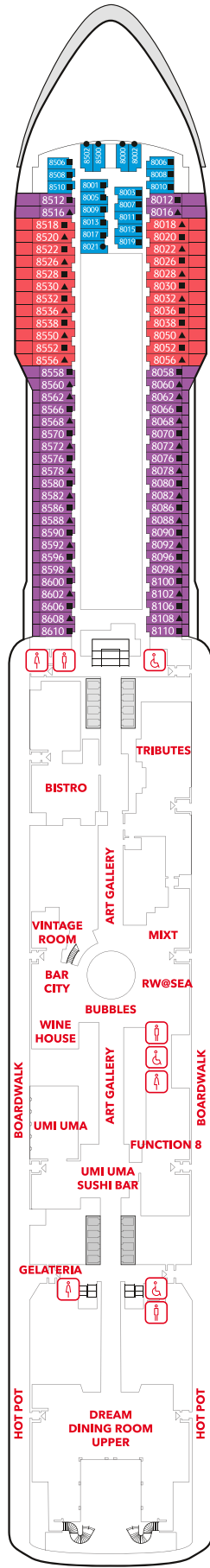
**DECK 10**

Suites, Balcony Deluxe, Balcony, Oceanview & Interior Staterooms



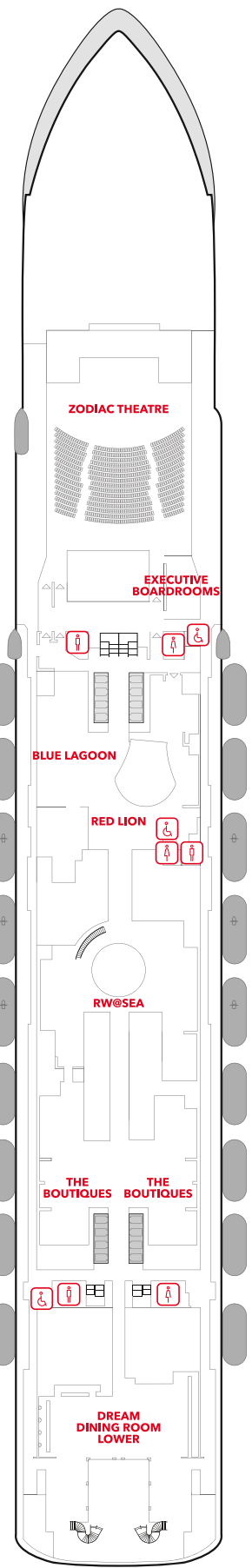
**DECK 9**

Suites, Balcony Deluxe, Balcony, Oceanview & Interior Staterooms, Helipad



**DECK 8**

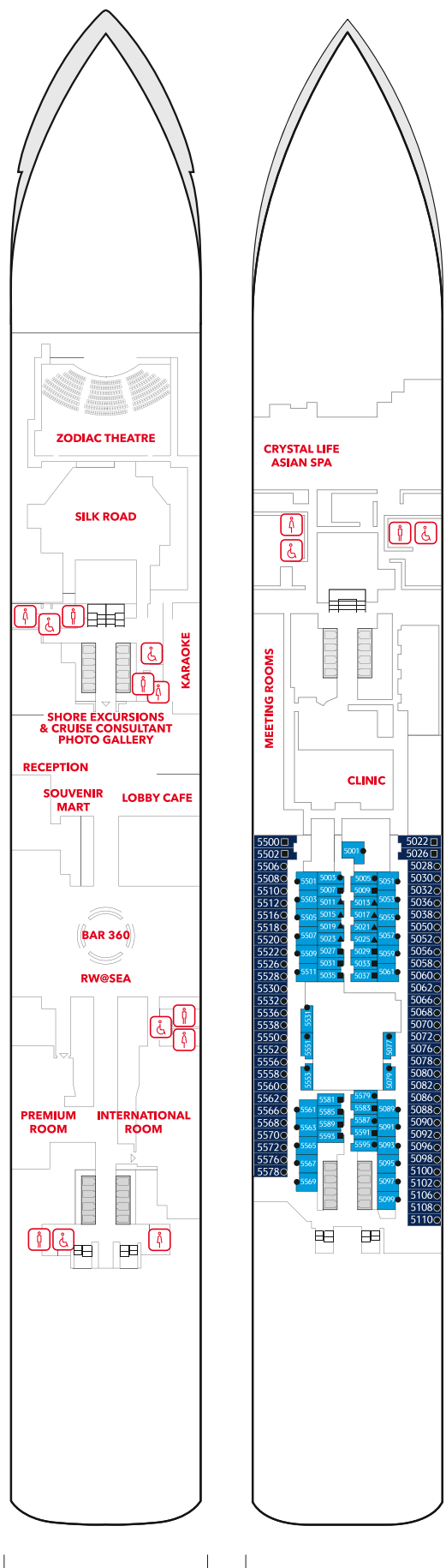
Restaurants, Bars, Lounges & Multi-purpose Venue, Balcony & Interior Staterooms



**DECK 7**

Main Theatre, Executive Boardrooms, Restaurants, Retail Venues & Entertainment Venues





**DECK 6**

Main Lobby, Reception, Restaurant, Café, Lounges & Entertainment Venues

**DECK 5**

Asian Spa, Oceanview & Interior Staterooms

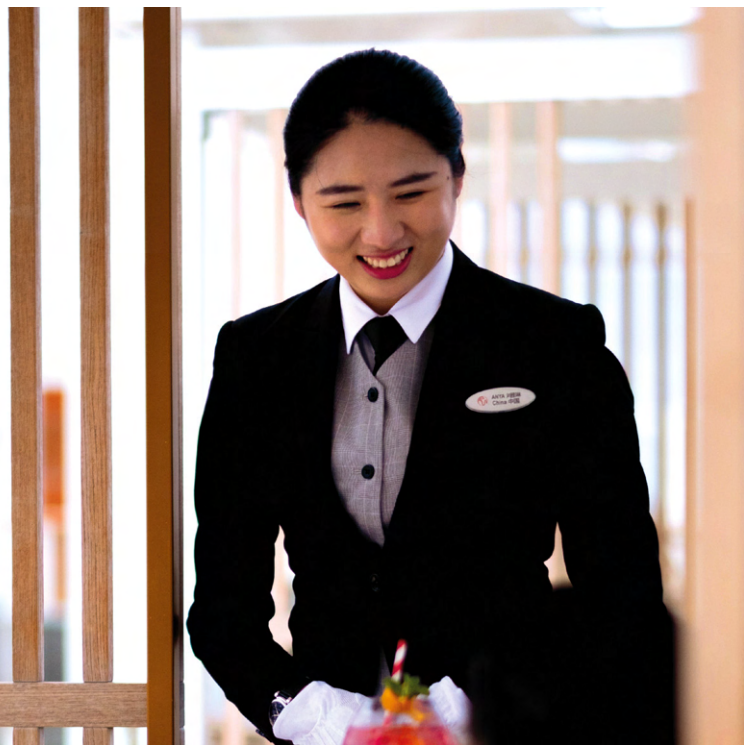
Restaurants & Bars	DECK	Teenagers & Children	DECK
Palm Court	19	Little Dreamers Club	16
Sun Deck Bar	17	Arcade	16, 6
The Lido*^	16		
Pool Deck Bar	16		
Crystal Life Cuisine	15		
Dream Dining Room Upper*	8		
Hot Pot	8		
Umi Uma	8		
Bistro	8		
Gelateria	8		
Bar City	8		
Dream Dining Room Lower*	7		
Blue Lagoon	7		
Red Lion	7		
Bar 360	6		
Lobby Cafe	6		
Silk Road	6		
The Palace	DECK	Sports & Recreation	DECK
Palace Pool Side Café	18	Waterslide Park	19
Palace Pool & Sun Deck	18	SportsPlex	19
Palace Gymnasium & Studio	18	Mini-Golf	18
Palace Spa	18	Rock Climbing Wall	18
Palace Restaurant	17	Ropes Course	18
Palace Lounge	17	Sun Deck	17
Palace Reception	17	Joggin Track	17
		Main Pool Deck	16
		Kids Water Park	16
		Boardwalk	8
Entertainment	DECK	Genting Club	DECK
Zouk Private Party Deck	18	Club	16
Zouk Beach Club	17	Lounge	16
Zouk	17		
RW@Sea	8,7,6		
Zodiac Theatre	7		
Karaoke	6		
International Room	6		
Premium Room	6		
Other Services	DECK		
		Business Center	19
		Bridge Viewing Room	15
		Helipad Embarkation Lounge	9
		Function 8 (Multi-purpose Venue)	8
		Tributes	8
		Executive Boardrooms	7
		Reception	6
		Shore Excursions	6
		Cruise Consultant	6
		Clinic	5
		Meeting Rooms	5

\*Inclusive Restaurant ^Halal Options Available

**Categories**

- Palace Villa
- Palace Penthouse
- Palace Deluxe Premium
- Palace Deluxe Suite
- Palace Suite
- Palace Suite (Accessible)
- Balcony Deluxe Stateroom
- Balcony Stateroom
- Balcony Stateroom (Accessible)
- Oceanview Stateroom
- Oceanview Stateroom (Accessible)
- Interior Stateroom
- Interior Stateroom (Accessible)

- Up to two persons occupancy
- ▲ Up to three persons occupancy
- Up to four persons occupancy
- ★ Up to six persons occupancy
- † Connecting Stateroom
- ↔ Adjoining Stateroom



# THE PALACE

## A Brand New Elevated Experience

The Palace is our all-suite concept within Genting Dream, your private club on board - the largest luxury ship-within-a-ship enclave found on any cruise liner. For connoisseurs of true Asian luxury, hospitality and exuberant living.

### *All-Inclusive Privileges*

- 1 All-Suite Accommodations
- 2 All-Butler Service
- 3 All-Indulgent Benefits
- 4 All-Encompassing Spaces

#### On your arrival

- Access to VIP lounge at terminal
- Priority check-in with butler assistance
- Fast track security clearance
- Priority luggage check-in and check-out with express delivery

#### In your suite

- 24-hour butler concierge service
- Standard Wi-Fi package throughout cruise
- Dream beds and luxurious Italian linens from Frette™
- Premium bath amenities
- Nespresso™ machine with gourmet coffee and tea
- Welcome minibar beverages and snacks
- Welcome beverages, fruit plate and snacks

#### When you dine

- Exclusive access to The Palace Restaurant
- Set meal entitlements at designated specialty dining restaurants
- Happy Hour with complimentary drinks such as selected wines, beers and non-alcoholic beverages at selected venues
- Free-flow of chilled juices, Chinese and Japanese teas, and coffee throughout the day at selected venues
- Priority booking for Chef's Table and Vintage Room

#### When you explore

- Priority access to live production shows
- Selected exclusive Kids Programme for children between 2 and 12 years of age

*Privileges are subject to change without prior notice.*

WEBSITE

[www.rwcruises.com](http://www.rwcruises.com)

HONG KONG ONLY

+852 800 938 887

EMAIL

[reservations.en@rwcruises.com](mailto:reservations.en@rwcruises.com)

MALAYSIA ONLY

1800814852



[resortsworldcruises](https://www.resortsworldcruises.com)

SINGAPORE & OTHER MARKETS

+65 800 852 8188