

8 天 6 晚 日本东北【赏枫物语】+ 东京 - Japan Airline

第 1 天 吉隆坡 / 东京 JL 724 (2250/0645+1)

第 2 天 (0645am) 抵达东京 ~ 羽田机场 / 秋田 JL163 (1110/1215) ~ 角馆武家屋敷 ~ 怀旧铁道: 搭乘火车 ~ 田泽湖



角馆·武家屋敷

角馆有「小京都」之别称，具有京都的大和风情，角馆的垂柳樱花一到春天便恣意盛开，到了秋天更是纵身一跃换成鲜红的枫叶。与自然景致融为一个画面的武家屋敷，美得令人沉醉。无论春天还是秋天，造访的游客络绎不绝。樱花与枫叶都美得令人惊叹，有机会请一定要在这两个季节来访！

(赏枫期: 10 月中-11 月中)

【怀旧铁道: 搭乘火车 (角馆~松叶)】



田泽湖

号称日本最深的自然湖泊，其美景足以令人屏息，湖面湛蓝澄净，群山环抱，湖面上立「辰子铜像」，景致相当美丽，秋天时分，田泽湖湛蓝湖水与环绕湖旁满山秋色相互映，美景令人难忘。

(赏枫期: 10 月中-11 月中)

午餐: 日式风味餐 // 晚餐: 酒店会席料理 或 酒店自助餐

酒店: 秋田 Akita. 雫石王子大飯店 (温泉饭店) 或同等级

第 3 天 采果体验 ~ 奥入濑溪流



果园采苹果



东北美景之最: 奥入濑溪流

为十和田湖地区的第一名胜。深邃的森林和清彻的溪水吸引了游客的光，从子口到烧山全长 14 公里的溪流，途中瀑布和急流很多，遍布奇岩怪石和原始森林景观，沿着流散步情趣盎然。

(赏枫期: 10 月中-11 月头)

早餐: 酒店 // 午餐: 日式风味餐 // 晚餐: 日式火锅

酒店: 岩手县 .ART 盛岡飯店 或同等级

第 4 天 严美溪 ~ 宫城鸣子峡展望台 ~ 银山温泉街



严美溪 - 河水历经数万年来切割而成，从峭壁青色的岩石当中可以看见红枫峥嵘而出，色泽十分迷人。除了欣赏险峭的溪谷巨岩景观鬼斧神工的奇景，严美溪最受游客欢迎的是特产「郭公团子」，这是一种有酱油、红豆、味噌等口味的麻糬串，大家必须以奇特方式来品尝！店家位在严美溪谷的另一岸，当客人点了一盘郭公团子，店家会将现作的郭公子团和茶放进竹篮里，再把竹篮挂上吊索，传送到对岸的游客手中，游客再将钱放入竹篮中，以木槌回敲告知店家，店家再慢慢拉回，团子往返的过程可是人气景观呢！(赏枫期: 10 月尾)



宫城鸣子峡展望台 - 特别是在红叶时节有很多游客前来观光。沿着附近的散步道往前走，眼前呈现出大片的遮住灰褐色岩石表面的红叶，此刻眼前的风景可以让游客一饱眼福。另外从鸣子峡旅游招待所的展望台，还可以看到红色和黄色的山坡与大深泽桥的鲜明对比，这里也是一处绝好的摄影之地。(赏枫期: 10 月中-11 月头)



银山温泉街, 可泡足汤 - 江戸时代因采银矿而繁荣的温泉街。轰动一时的 NHK 电视连续剧「阿信」就是以这里的「能登屋」为场景。伫立在银山川两岸, 木造两式建筑物栉比鳞次造就了浪漫的温泉乡。三层、四层重迭之屋檐瓦片诉说着银山的悠久历史, 热腾腾的烟雾缓缓上升, 双足浸泡在温泉里, 一边眺望风景一边闲聊。

早餐: 酒店 // 午餐: 日式风味餐 // 晚餐: 酒店会席料理 或 酒店自助餐

酒店: 岩手县. SANSATEI (温泉饭店) 或同等级

第 5 天 五大堂 ~ 松岛游船 ~ 仙台 Mitsui Outlet



五大堂--是一座松岛临济宗妙心寺派的佛堂, 最初的建筑建于 807 年, 现存的建筑是 1604 年仙台藩初代藩主伊达政宗为复兴佛教在瑞岩寺重建。据说是东北地区最古老的桃山建筑, 被列为国家重要文化财产。五大堂所在的五大堂岛与本州岛之间由一条红色的桥相连, 在桥上梁木之间都有 15cm 的间隙, 可以使你看到脚底下的大海。



日本三景之一: 松岛游船 - 海鸥飞翔--日本著名俳句大师松尾芭蕉在《奥之细道》中曾如此赞叹松岛: "扶桑第一绝景, 可与洞庭、西湖媲美"。松岛湾由 260 多个大大小小的岛屿构成, 秀丽迷人的岛屿遍布四处, 在此可观赏到日本最具代表性海湾的四季美景。搭乘松岛游览船巡游松岛湾里的美景。



Mitsui Outlet

无论什么样的季节或天气, 客人都可以尽情在这里享受逛街的时刻。这里有着 650 座的美食广场和售卖着当地蔬果和特色手信的“北海道当地农特产店”。

早餐: 酒店 // 午餐: 松岛鲜蚝风味餐 // 晚餐: 日式 BBQ

酒店: 仙台 Sendai Hills Hotel 或同级

第 6 天 磐梯朝日国立公园 ~ 桧原湖、五色沼 ~ 鬼怒川. 鬼怒楯岩大吊



盘梯朝日国立公园 · 五色沼、桧原湖

从高汤温泉小镇出发, 沿着风光明媚的道路徒步前进, 在这条全长 11 公里的路线两度跨越迷人的盘梯吾妻天际线之后, 即可抵达色彩缤纷的**五色沼** 及附近的**桧原湖** ...



鬼怒楯岩大吊桥

早餐: 酒店 // 午餐: 日式风味餐 // 晚餐: 酒店会席料理 或 酒店自助餐

酒店: 鬼怒川观光 (温泉) 或同级

第 7 天 日立海滨公园 ~ 东京. 新宿 ~ 成田 Aeon



日立海滨公园

每年 10 月秋天有 3 万株以上的扫帚草, 整片红色地毯的景色是必看的绝景



东京新宿 + 成田 Aeon 逛街

早餐: 酒店 // 午餐: 日式风味餐 // 晚餐: 日式风味餐

酒店: 东京成田. Hotel Mystays Premier Narita 或同级

第 8 天 东京 ~ 送往机场 JL 723 (1115/1810) 早餐: 酒店 // 午餐: 飞机餐

请注意: 住宿酒店, 午晚餐及旅游景点若遇特殊情况不可抗拒之因素, 本公司保有变更之权利与义务! **Terms & Conditions Apply**

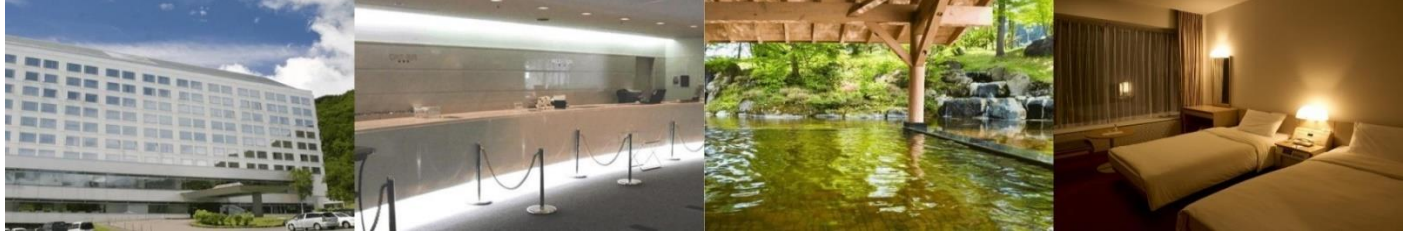
26 OCT 2024 - Maple Leaf Season
by Japan Airline

Tour Fare : **RM 11388/person** (Twin Share, Included air ticket , tips , Travel Insurance)

**** 70 years old & above : top up RM 100/Person for Travel Insurance**

【 参考酒店如下 Hotels information as below 】

★ 岩手县 . 雫石王子大酒店 (温泉饭店) / Iwate. Shizukuishi Prince Hotel (Hot Spring) or similar



★ 岩手县. ART 盛岡飯店 Iwate. ART HOTEL Morioka or similar



★ 宫城县 . Sansatei 旅馆 (温泉) / Miyagi . Sansatei (Hot Spring) or similar



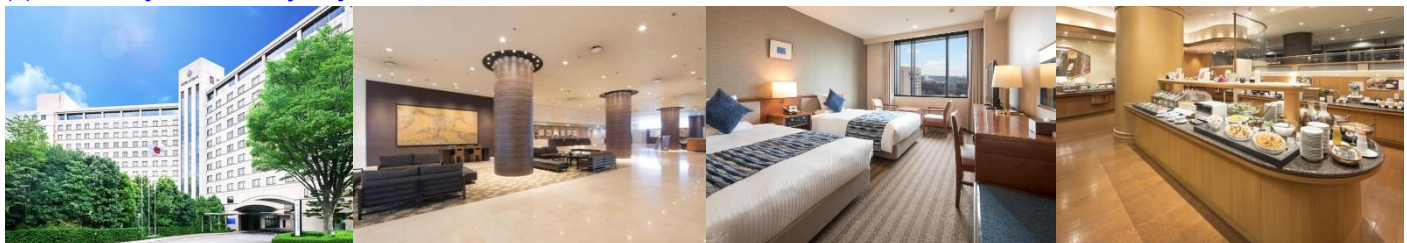
★ 仙台 Sendai Hills 饭店 / Sendai Hills Hotel or similar



★ 鬼怒川御苑温泉酒店 / Hotel Kinugawa Gyoen (Hotspring) or similar



★ 东京 Tokyo. Hotel Mystay Premier Narita or similar



8Days 6 Nights Japan Tohoku **【maple leaf】 + Tokyo –Japan Airline**

Day 1 Kuala Lumpur / Tokyo (Narita) **JL 724 (2250/0645+1)**

Day 2 (0645am) arrive Tokyo + Haneda / Akita **JL163 (1110/1215)** Kakunodate • Bukeyashiki ~ Lake Tazawa



Kakunodate • Bukeyashiki -

Kakunodate, often called "Small Kyoto," resembles Kyoto in size and culture. It's in Akita, surrounded by three mountains: East, known for flowers; North, hosting the old town; and South, protected by the Tamagawa river. This setup made it ideal for a castle town. By the 1620s, it had about 80 samurai homes, 350 shops, and other houses.

(Maple Leaf Season: Mid of OCT - Mid of NOV)



【Included Akita Railway , take train from Kakunodate to Matsuba 】



Lake Tazawa

Lake Tazawa is a caldera lake in the city of Semboku, Akita Prefecture, northern Japan. It is the deepest lake in Japan at 423 metres. The area is a popular vacation area and several hot spring resorts can be found in the hills above the lake.

(Maple Leaf Season: Mid of OCT - Mid of NOV)

Lunch: Japanese Cuisine // Dinner: Hotel Japanese Set or buffet

Hotel: Iwate. Shizukuishi Prince Hotel (Hot Spring) or Similar

Day 3 Iwate ~ Fruit Picking ~ Oirase Mountain Stream



Fruit Picking (Apple)



【Oirase Mountain Stream -- Tohoku's prettiest scenic 】

Was the 1st spot attractive point of Lake Towada. There were many waterfalls and torrent, various type of rock formation as well as the different type of flora along the 14km journey that catching the eyes of tourists.

(Maple Leaf Season: Beginning of OCT - Beginning of NOV)

Breakfast: Hotel // Lunch: Japanese Cuisine // Dinner: Japanese steamboat

Iwate. ART HOTEL Morioka or similar

Day 4 Gembikei Gorge ~ Naruko-Kyo Valley Observation Deck ~ Ginzan Onsen Street



Gembikei Gorge : It was designated as a national place of scenic beauty and a natural monument. Gembikei is famous for its dango, or sweet rice dumpling. Gembikei is famous for dango, sweet rice dumplings. You signal the store across the river with a knock, and a basket brings back dango and tea. Three types of dango are available: an (red bean) , goma (sesame) , and mitarashi (sweet soy sauce syrup) .

(Maple Leaf Season: End of OCT)



Naruko-Kyo Valley Observation Deck -is a V-shaped canyon in Miyagi Prefecture that sits about 5 minutes by car away from Naruko Onsen Station on the JR Rikuu East Line. Both sides are about 100m in height and it stretches about 2.5km. During each season you can enjoy the beautiful scenery, and most tourists come to see the autumn leaves. **(Maple Leaf: Mid of OCT - Beginning of NOV)**



Ginzan Onsen Street / Foot Bath--During the Edo Period, this Onsen Street was famous because of the silver mining; was the shooting place of NHK Drama 「Oshin」 . Wooden building that constructed into two style during Taisho Era was standing both sides of this street. Three of four overlapping roof tiles are showing us the historical of this place.

Breakfast: Hotel // Lunch: Japanese Cuisine // Dinner: Hotel Buffet or Japanese Set

Iwate . Sansatei (Hot Spring) or similar

Day 5 Godai-do Hall ~ Cruise ride on Matsushima ~ Sendai Mitsui Outlet



Godai-do Hall-is a Rinzaï Myoshinji Buddhist temple located in Miyagi Prefecture's scenic Matsushima. The gorgeous landscape that embodies Matsushima has been voted as one of the 3 most scenic locations in Japan. It is said to be the oldest building in the Tohoku area that uses Momoyama architecture, and is designated at important cultural property.



Cruise ride on Matsushima -- Japan Top Three Scenery
Matsushima Bay as formed by various size of islands and we can enjoy the most represent view of Japan among the four seasons at here. Matsushima is covering the historical relics of Date Masamune as well.

Mitsui Outlet

Breakfast: Hotel // Lunch: Matsushima Oyster Cuisine // Dinner: Japanese BBQ

Hotel: Sendai Hills Hotel or Similar

Day 6 Bandai-Asahi National Park ~ Kinutateiwaotsuri Bridge



Bandai-Asahi National Park

Goshikinuma Ponds & five volcanic lakes



Kinutateiwaotsuri Bridge

Footbridge across a gorge surrounded by lush woodland, with sweeping river & fall foliage views.

Breakfast: Hotel // Lunch: Japanese Cuisine // Dinner: Hotel Buffet or Japanese Set

Hotel Kinugawa Gyoen (Hotspring) or similar

Day 7 Hitachi Seaside Park ~ Tokyo Shopping



Hitachi Seaside Park

Wooded walking trails & bike rentals in a vast park known for its seasonal flower gardens.



Enjoy Shopping @ Tokyo Shinjuku & Aeon Narita

Breakfast: Hotel // Lunch : Japanese Cuisine // Dinner : Japanese Cuisine

Hotel: Tokyo. Hotel Mystay Premier Narita or similar

Day 8 (Breakfast: Hotel) Narita airport / Kuala Lumpur JL 723 (1115/1810)

** The itinerary, meals and hotel arrangement are subject to the final adjustment of the local ground operator. TERMS & CONDITIONS APPLY **

26 OCT 2024 - Maple Leaf Season

by Japan Airline

Tour Fare : RM 11388/person (Twin Share, Included air ticket , tips , Travel Insurance)

**** 70 years old & above : top up RM 100/Person for Travel Insurance**

【 参考酒店如下 Hotels information as below 】

★ 岩手县 . 雫石王子大酒店 (温泉飯店) / Iwate. Shizukuishi Prince Hotel (Hot Spring) or similar



★ 岩手县. ART 盛岡飯店 Iwate. ART HOTEL Morioka or similar



★ 宫城县 . Sansatei 旅馆 (温泉) / Miyagi . Sansatei (Hot Spring) or similar



★ 仙台 Sendai Hills 飯店 / Sendai Hills Hotel or similar



★ 鬼怒川御苑温泉酒店 / Hotel Kinugawa Gyoen (Hotspring) or similar



★ 东京 Tokyo. Hotel Mystay Premier Narita or similar

